

# Technowood® SSS Guide Wire, BK Shape, 1.5 mm

## Double Bend Feature



Hokkaido Social Medicine Hospital



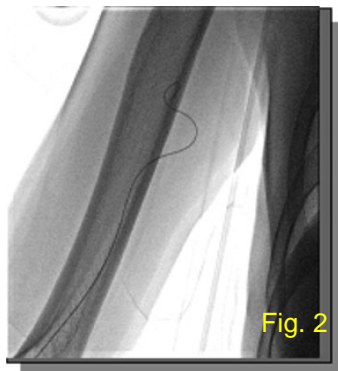
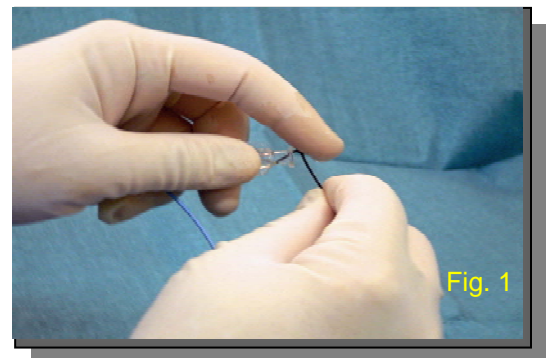
Hokkaido Social Medicine Hospital  
Cardiology Department  
Setsuya Miyata, M.D.



We assure the guide wire conformity prior to usage. Slightly enlarged distal curvature enables a direct advancement into the catheter without an aid of straightner (Fig. 1).

**This Double Bend feature improves navigation performance:**

- \* side branch entry is unlikely (Fig. 2).
- \* navigation through tortuous vessels into ascending aorta is trouble free (Fig. 3 & 4).



**Conclusions:** Slightly enlarged distal curvature improves navigation performance.

★ **JAPAN**

**Technowood International Corporation**  
30-19 Kohoku, 4-Chome  
Adachi-Ku, Tokyo 123-0872  
Japan

Tel: 813-3898-5252  
Fax: 813-3898-5252  
Web-Site: <http://www.technowood.co.jp>  
Contact: [info-tic@technowood.co.jp](mailto:info-tic@technowood.co.jp)

★ **USA**

**Technowood America Corporation**  
3001 Red Hill Avenue  
Building 2, Suite 201  
Costa Mesa, CA 92626  
U.S.A.

Tel: 1-714-434-8713  
Fax: 1-714-434-8715  
Web-Site: <http://www.technowood.com>  
Contact: [info@technowood.com](mailto:info@technowood.com)

★ **Philippines**

**Technowood Manufacturing Corporation**  
N2840 Bayanihan Street Extension  
CSEZ Clarkfield, Pampanga 2009  
Philippines

Tel: 63-45-599-5570 or 63-45-599-5571  
Fax: 63-45-599-5574  
Web-Site: <http://www.technowood.com.ph>  
Contact: [info@technowood.com.ph](mailto:info@technowood.com.ph)