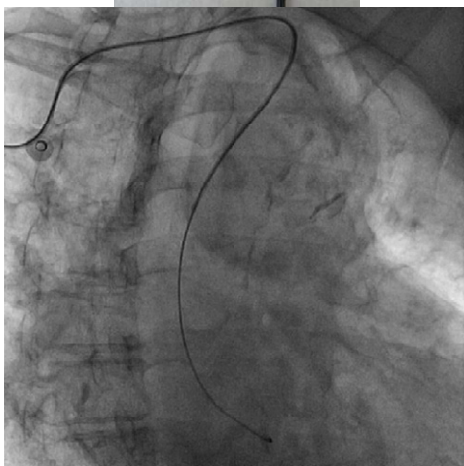


# Technowood®

SSS Guide Wire  
BKM Shape, 1.5 mm  
unique and effective



Technowood SSS Guide Wire BK1.5M is an ideal choice for CAG and PCI through trans brachial or trans radial approach.

The distal shape possesses a unique curve and is a slightly opened J curve, and makes it much easier to advance into catheter hub without the use of tedious guide wire tip straightner.

A second angled curve provides a featured selective control of the guide wire to facilitate the guide wire advancement when challenged by the tortuous subclavian artery.

Guide wire body is stiff enough to straighten up the distal shape of the PCI guiding catheter while the distal tip of the guide wire is soft and safe toward the blood vessel walls.

Technowood SSS Guide Wire BK1.5M is uniquely engineered with modified distal J curve and the secondary angled curve; each curve designed for specific clinical needs.

## ★JAPAN

**Technowood International Corporation**  
30-19 Kohoku, 4-Chome  
Adachi-Ku, Tokyo 123-0872  
Japan

Tel 81-3-3898-5252  
Fax 81-3-5898-5252  
Web Site [www.technowood.co.jp](http://www.technowood.co.jp)  
Contact [info-tic@technowood.co.jp](mailto:info-tic@technowood.co.jp)

## ★USA

**Technowood America Corporation**  
3001 Red Hill Avenue  
Building 2, Suite 201  
Costa Mesa, CA 92626  
U.S.A.

Tel 1-714-434-8713  
Fax 1-714-434-8715  
Web Site [www.technowood.com](http://www.technowood.com)  
Contact [info@technowood.com](mailto:info@technowood.com)

## ★Distributed by:

Tel  
Fax  
Web Site  
Contact