

# Technowood® SSS Guide Wire, BK Shape

Midorigaoka Hospital

Japan Council for Quality Health Care Recognized Hospital

Committed to serve people with social health care.

## Coronary angiogram with Technowood SSS Guide Wire, BK Shape



Fig. 1

Our institute prefers left radial artery approach almost exclusively and an exchange wire (180 cm) is mandatory for catheter exchange (Fig. 1).

Technowood SSS Guide Wire, BK shape is positioned in the brachial artery without entering the side branch (Fig. 2).

Catheter exchange is performed over the Technowood SSS Guide Wire, BK shape (Fig. 3).

**Results:** Radial artery approach advancing a 4F catheter over the Technowood SSS Guide Wire, BK3, 180 cm, 0.035" is our preferred method. Initially, we used the Guide Wire with a "J" shape and experienced some difficulties, however, switching to BK shape allows us to exchange Guide Wire without a straightner. This Guide Wire, BK shape may need some learning curve, however, provides better comfort for the physician with less likelihood of entering the side branch. Furthermore, this Guide Wire, BK shape is very smooth on the surface due to a hydrophilic coating and distal end is

configured straight after the curve, which provides a good advancement even in the tortuous vessels. Our institute is using a Bi-plane visual equipment to alleviate the renal failure resulting from contrast media, therefore, we sometime have difficulties visualizing anteriorly to proximally on the radial artery approach, however we take advantage of this Guide Wire, BK shape for its blind operation. Traditional spring guide wire has much higher friction with the catheter inner lumen and has difficulties in the tortuous vessels. We have not seen these problems with this Guide Wire, BK shape. Other institutes that have not adapted Bi-plane equipment can still use the Technowood SSS Guide Wire, "J" shape, however, this Guide Wire, BK shape allows us a blind operation without problems and shortens the operation time.



Technowood SSS Guide Wire  
BK (Beak) shape  
Cat No. : H502-3518BK3

Approval # 20700BZZ00652000



Fig. 2

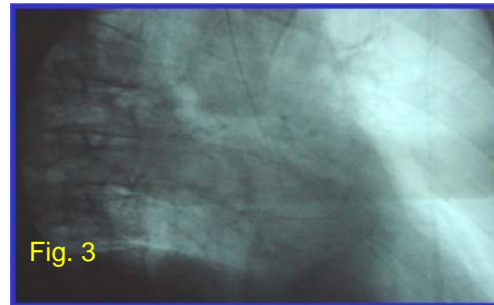


Fig. 3

### ★ JAPAN

**Technowood International Corporation**  
30-19 Kohoku, 4-Chome  
Adachi-Ku, Tokyo 123-0872  
Japan

Tel: 813-3898-5252  
Fax: 813-3898-5252  
Web-Site: <http://www.technowood.co.jp>  
Contact: [info-tic@technowood.co.jp](mailto:info-tic@technowood.co.jp)

### ★ USA

**Technowood America Corporation**  
3001 Red Hill Avenue  
Building 2, Suite 201  
Costa Mesa, CA 92626  
U.S.A.

Tel: 1-714-434-8713  
Fax: 1-714-434-8715  
Web-Site: <http://www.technowood.com>  
Contact: [info@technowood.com](mailto:info@technowood.com)

### ★ Philippines

**Technowood Manufacturing Corporation**  
N2840 Bayanihan Street Extension  
CSEZ Clarkfield, Pampanga 2009  
Philippines

Tel: 63-45-599-5570 or 63-45-599-5571  
Fax: 63-45-599-5574  
Web-Site: <http://www.technowood.com.ph>  
Contact: [info@technowood.com.ph](mailto:info@technowood.com.ph)