

Technowood SSS Guide Wire BK1.5M The Effectiveness of New Shape



Cardiovascular Director
Yoshiaki Ito, M.D.



Saiseikai Yokohama Tobu Hospital



CAT NO. H503-3520BK1.5M

Fig.1 SSS Guide Wire BK1.5M (H502 series)

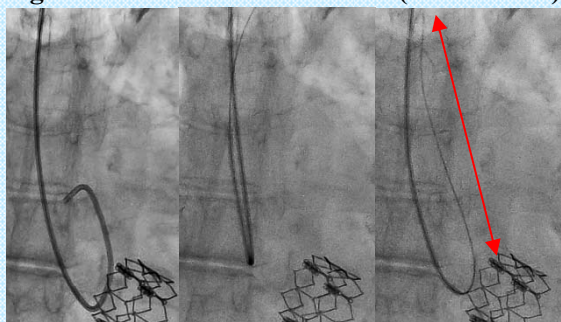
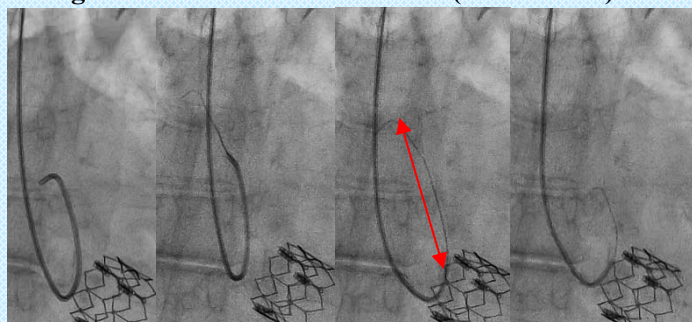


Fig.2 SSS Guide Wire BK1.5M (H503 series)



Saiseikai Yokohama City Tobu Hospital is a high volume center of CAG (about 2500 cases per year) and PCI (about 1000 cases per year). We use Technowood SSS H502 Guidewire for CAG and PCI because Technowood SSS H502 Guidewire surpasses safety and effectiveness among all other guidewires on the market. For TRA, BKM tip shape retains its BKM tip shape in tortuous anatomy minimizing possibility of getting into the side branch vessels.

On the other hand, other J type guidewires on the market require the tip straightener to insert the guidewire into the catheter hub and Y-connector; however, Technowood SSS Guidewire is easier to insert without the use of straightener. Moreover, as our first choice, its adequate hydrophilic coated is also a good characteristic. There are two points to be addressed; first is the lack of push-ability in the tortuous vessels and second is the lack of support-ability to operate catheter in Aorta.

In order to overcome these points, we decided to try Technowood SSS H503 Guidewire (Fig.,2); stiffer core wire compared to H502's one (Figure 1). In fact, Technowood SSS H503 Guidewire has improved support-ability for the catheter.

After TAVI procedure for AS patient who has an enlargement of Ascending Aorta. If operating the catheter in Aorta is necessary, Technowood SSS H502 Guidewire does not have much support-ability for the catheter unless reaching the bottom of Ascending Aorta; however, Technowood SSS H503 Guidewire allows the catheter operation to be easier due to the length of Technowood SSS H503 Guidewire coming out of the catheter shorter than Technowood SSS H502 Guidewire (Figure 1 and 2).

Conclusion:

The guidewire operation in Aorta sometimes may cause the risk of blood vessel injury and embolism; therefore, the guidewire operation should be as little as possible. Finally, Technowood SSS H503 Guidewire leads you to success of the catheterizations with less guidewire operation compared to ordinary guidewires.