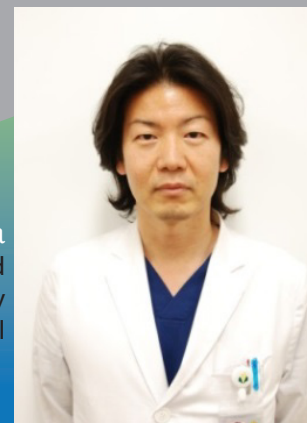


SoftNAV Catheter:

Judkins Safety

The catheter's unique tip follows the natural curve of the vessels to easily achieve coaxial engagement to the left and right coronary ostia. The catheter is also coated with a hydrophilic coating to decrease frictional resistance and improve the catheter's maneuverability especially in tortuous vessels during TRA.

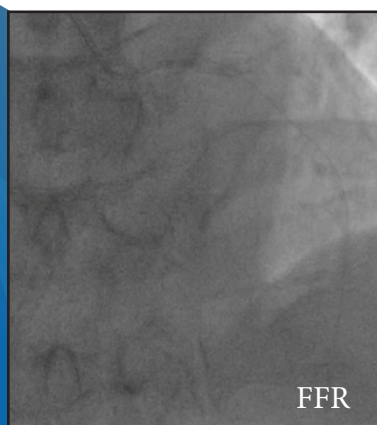
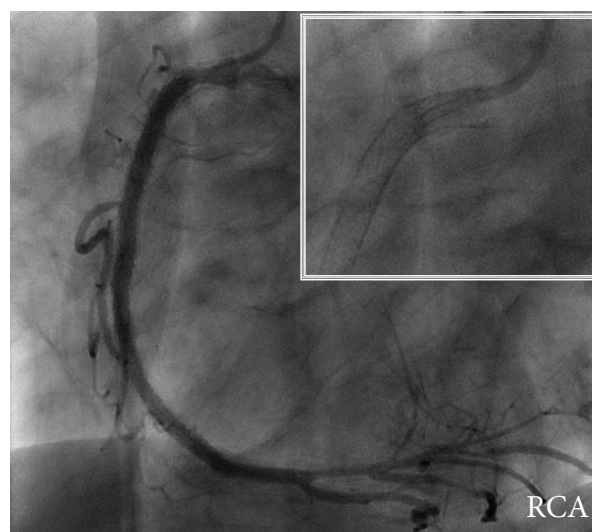
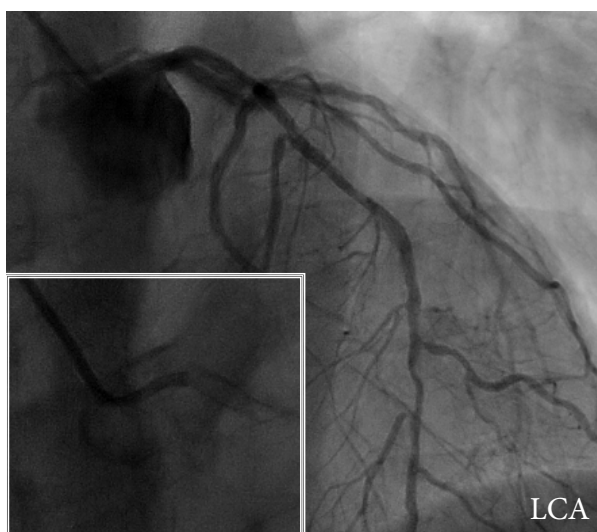


Dr. Seiji Habara

Department Head
Department of Cardiology
Kurashiki Central Hospital

Case Details:

60 year old male presenting with angina pectoris on exertion. Angiogram shows previous revascularization. (RCA: BES in the ostial segment and PtCr-EES in the proximal-to-mid segment. LCA: PtCr-EES in the proximal segment of the LCX.)

**Findings:**

The catheter's uniquely-shaped tip allows for a quick and easy coaxial engagement with good image quality during angiography.

FFR was also done to see the extent of the lesion in the mid segment of the LCA. No issues encountered with the insertion and navigation of the FFR guidewire inside the catheter.

Conclusion:

Judkins Safety's unique tip allows the catheter to easily and naturally engage the coronary ostia. This also ensures that the tip does not point towards the upper walls of the ostium thus improving safety to the patient.