

SoftNAV Catheter:

Judkins Safety

【Concept】

The catheter's unique tip follows the natural curve of the blood vessels to easily and safely achieve coaxial engagement, especially to the right coronary ostium.



Dr. Shuichi Yoneda

Coronary Disease Department
National Cerebral and Cardiovascular
Center Hospital
Osaka, Japan

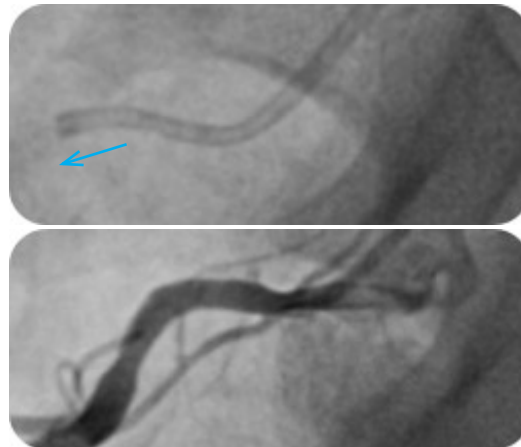
【Case Details】

30 year old male with no risk factors for CAD and suspected to have vasospastic angina.

【Findings】

LCA showed no significant stenosis. Encountered pressure damping while using a JR4.0 to engage the RCA with an inferior take off. Switched to a Judkins Safety Right. The Judkins Safety's curved tip allowed for an easy coaxial engagement and made it possible to safely administer ergonovine.

LAO30CRA20



【Conclusion】

Engaging a RCA with an inferior takeoff using a regular JR catheter poses some serious risks like injury to the arterial walls due to deep seating or ventricular fibrillation from selective and deep hooking of the conus branch. But Technowood's Judkins Safety Right has a unique tip that points downward, following the natural curve of the artery thus achieving a quick and easy coaxial engagement. This reduces the risk of vascular injury and, in particular, this allows for stable administration of medicine during spasm provocation tests.